



# REPORT MANAGER

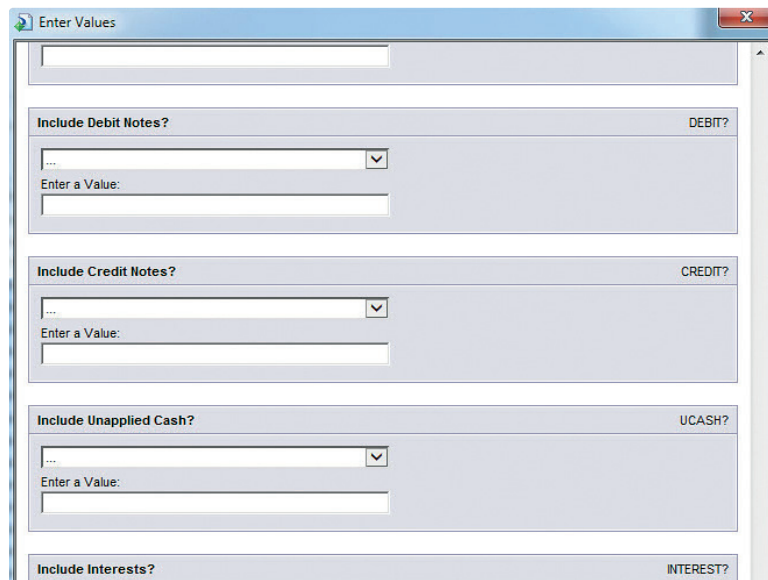
## A simple utility that streamlines the complexities of reporting **REPORT MANAGER®** and SAP® Crystal Reports

Over the years, we've listened to plenty of consultants who use SAP® Crystal Reports within the Sage 300 suite. There are two areas that received the most comment; the restrictive user interfaces and the inability to schedule reporting. So our development team looked at ways of turning a good application into a great application.

Report Manager® replaces the difficult to use and ugly SAP®Crystal Report parameter interface with a friendly and intuitive interface that can be customized to suit. There are also options to email and schedule reports so that the task of creating, editing and distributing SAP®Crystal Reports is simplified.

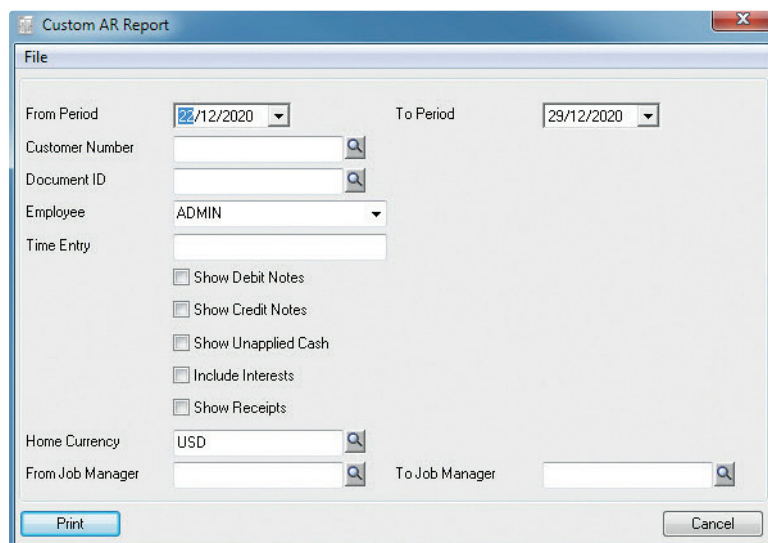
Whether you work in-house preparing reports for management or you're an outside consultant doing the same for your Sage clients, Report Manager® is an affordable utility that pays for itself, again and again.

**HERE'S HOW AND WHY.  
 NOW, LET'S TAKE A CLOSER  
 LOOK AT A FEW KEY FEATURES  
 AND BENEFITS.**



AR DEBTORS  
 REPORT

**BEFORE**



**AFTER**



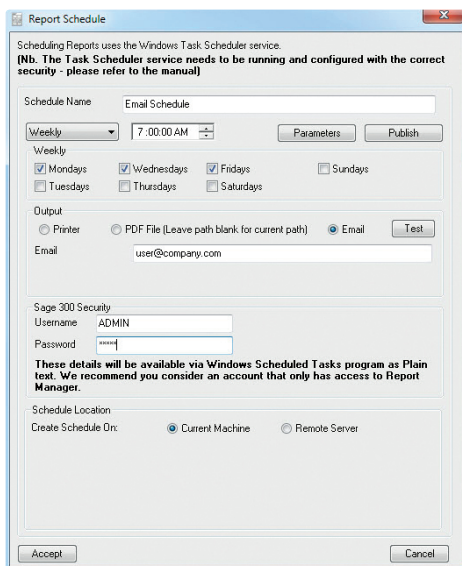
Contact your Sage 300 Solution Provider for further information.  
 Contact details below for up-to-date information on Technisoft products.  
 W [www.technisoft.com](http://www.technisoft.com) | E [technisoft@technisoft.com.au](mailto:technisoft@technisoft.com.au) | T +617 5554 5844 | F +617 5554 5522



Development Partner  
 Endorsed

# REPORT MANAGER®

Isn't just another pretty (inter)face.



## SCHEDULE YOUR REPORTS

Report Manager® gives you the ability to schedule any of your reports at multiple times and in multiple ways. Email, print or save as PDFs.

## SINGLE POINT OF ENTRY

Manage and run any standard or custom Sage 300 reports – from a single point.

## CREATE UNLIMITED REPORT PARAMETERS – AUTOMATICALLY!

Report Manager® automatically extracts existing SAP® Crystal Report parameters, and then enables you to add Sage 300 finders, text fields, dates, drop down lists, pulldown editable parameters, and check boxes. And the report parameters appear on the report interface when the report is run.

## SEAMLESS INTEGRATION

Report Manager® supports all existing Sage 300 reports – both core and third party as well as any custom reports.

## UNLIMITED REPORT GROUPINGS!

Group your reports by what to run, like General Ledger, Accounts Receivable, Inventory Control etc. Or when to run, like end of day, week or month. Report Manager®'s logical software architecture enhances SAP® Crystal Reports grouping capabilities.

## SECURITY OPTIONS

Control who sees and prints each report.

## SIMPLIFICATION

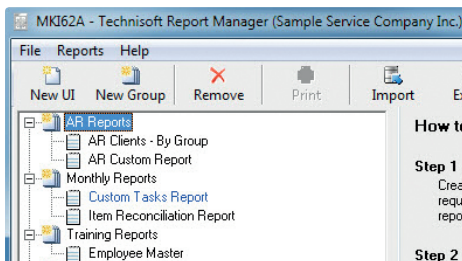
Report Manager® installs as a full Sage 300 product and appears on the Sage 300 desktop, or can be launched directly from your Windows desktop, while maintaining full security authentication.

## FLEXIBILITY

Outsource your reporting to a Sage Solution Provider who can create a custom report and interface; then export it and email it to you; you simply open Report Manager® and import the finished report from your Sage 300 desktop.

## LICENSING AFFORDABILITY

For customers with multiple companies that produce their own reports, you only need a single license. License includes; manual with HTML support.



---

For client testimonials, pricing and answers to your questions, contact us [www.technisoft.com](http://www.technisoft.com)

---



COPYRIGHT © 2015 TECHNISOFT PTY LTD. ALL RIGHTS RESERVED.

Technisoft, the Technisoft logo and Report Manager are registered trademarks of Technisoft Pty Ltd. Sage 300, the Sage 300 logo and the Sage 300 product names mentioned herein are registered trademarks or trademarks of Sage Software International Inc. In the United States and other countries. Used by permission. SAP Crystal Reports is a registered trademark of SAP. All other trade names referenced in this brochure are trademarks of their respective owners. The contents of this brochure including specifications, system recommendations, program integration, and program requirements are subject to change without notice.

PROGRAM REQUIREMENTS. Report Manager, Sage 300.